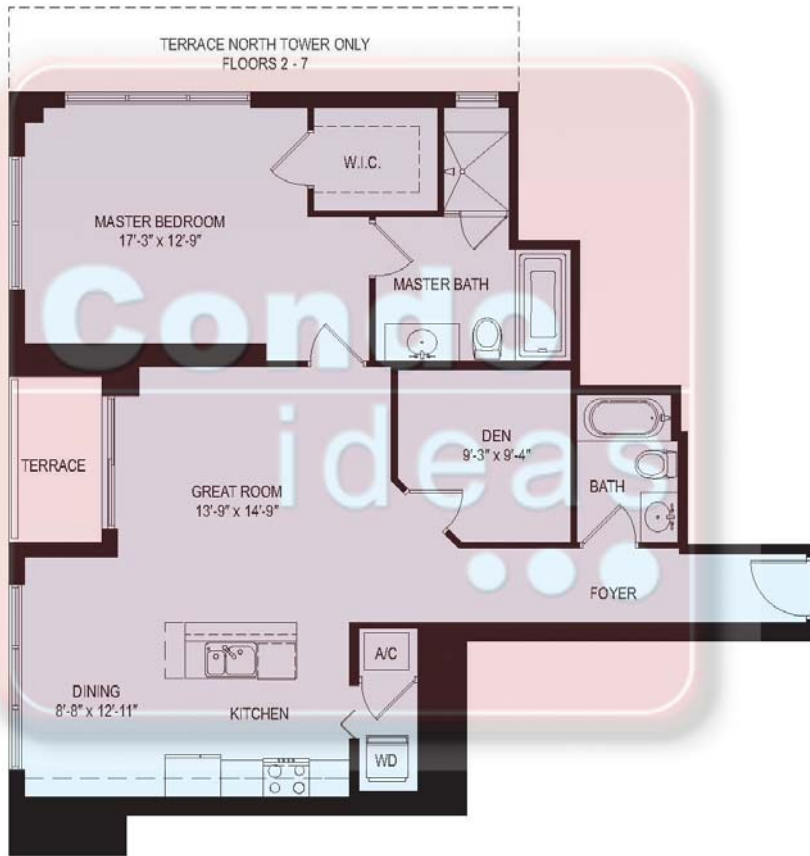


VIZCAYNE

RESIDENCE 2

1 Bedroom, 2 Bath with Den

| | |
|-------------------|---------------------------------------|
| Living Space | 1146 sq. ft. (106.46 m ²) |
| Balcony | 45 sq. ft. (4.18 m ²) |
| Total Living Area | 1191 sq. ft. (110.64 m ²) |



Contact: Condoideas.com

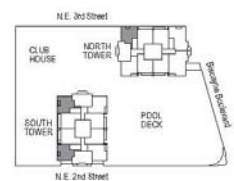
Tel.(305) 428-2439

Fax.(305) 675-2779

Email. Info@condoideas.com

Web www.condoideas.com

Condoideas.com is an independent service provider and is not affiliated with the developer



Unit Dimensions and Square Footages: There are two generally accepted methods of measuring the boundaries of such an residential condominium. The first method is based on the description of the boundaries of the Unit, as set forth in Section 2.2 of the Declaration of Condominium, and generally includes the space within the Unit (the "Engineering Method"). The other method, which is customarily used in sales brochures, generally measures the Unit to the outside finished surface of exterior walls and to the centerline of window opening walls, include portions of the adjacent Common Elements (the "Architectural Method"). The estimated square footage of the Unit, as determined under the Architectural Method, will be greater than the estimated square footage as determined under the Engineering Method. The Architectural Method is generally used in sales materials and may be provided to show a prospective buyer to compare the Unit with units in other condominium projects. Both utilize the method of measurement.